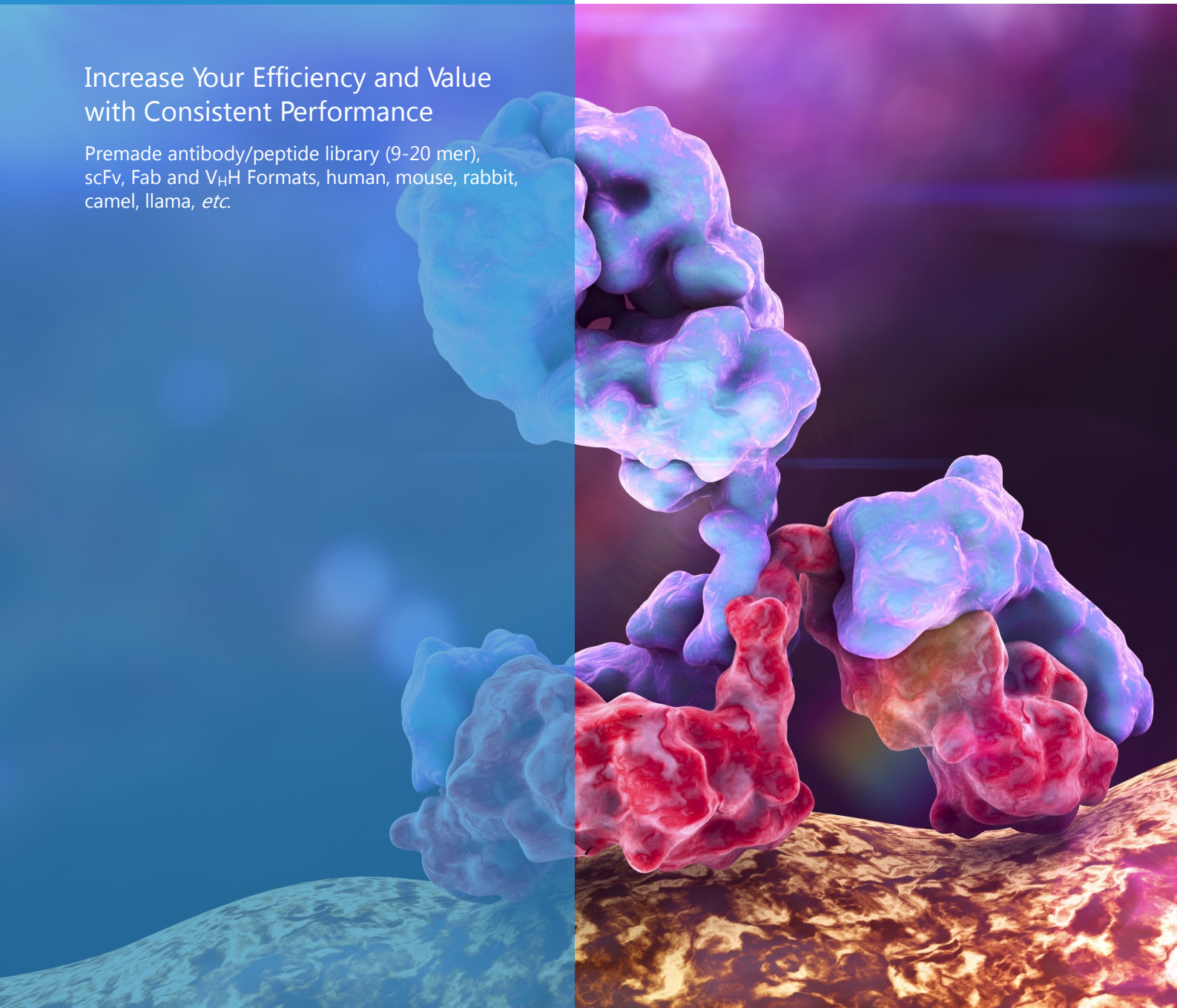


Antibody/Peptide Development by Premade Display Libraries

Increase Your Efficiency and Value
with Consistent Performance

Premade antibody/peptide library (9-20 mer),
scFv, Fab and V_HH Formats, human, mouse, rabbit,
camel, llama, *etc.*



Distributed by:

CliniSciences Group

Antibody Development *via* Premade Library

Premade Antibody Phage display Libraries

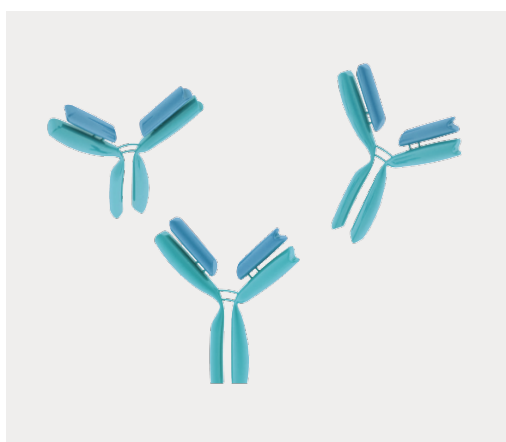
Creative Biolabs has established a comprehensive list of libraries for *de novo* discovery of therapeutically relevant antibodies. These well-tailored premade antibodies have made powerful toolbox to streamline our clients' therapeutic/diagnostic agent discovery pipeline. To fulfill customers' demands, we provide antibody libraries in the form of scFv, Fab, V_HH, original from human, mouse, rabbit, chicken, camel and llama, DNA libraries.

Distributed by:
CliniSciences Group

◆ Fab libraries ◆ scFv libraries ◆ V_HH libraries



Species	Library ID	Display Technology	Library Format	Library Size	Out-licensing
Human	HuScL-6	pIII-fusion, Phagemid Phage Display	Naïve scFv	2.1×10^{11}	
	HuScL-7	pIII-fusion, Phagemid Phage Display	Naïve scFv	1.1×10^{10}	✓
	HuScL-3S	pIII-fusion, Phagemid Phage Display	Semi-synthetic scFv	$>1.0 \times 10^{11}$	
	HuFabL-4	pIII-fusion, Phagemid Phage Display	Naïve Fab	1.9×10^{10}	
	HuFabL-5	pIII-fusion, Phagemid Phage Display	Naïve Fab	1.1×10^{10}	✓
	HuFabssL-1	pIII-fusion, Phagemid Phage Display	Naïve & synthetic Fab	1.8×10^{10}	
	HuScL-YDP-3	Yeast Display	Naïve scFv	1.9×10^8	✓
Mouse	MuScL-2	pIII-fusion, Phagemid Phage Display	Naïve scFv	5.3×10^{10}	✓
	MuFabL-2	pIII-fusion, Phagemid Phage Display	Naïve Fab	1.2×10^{10}	✓
Rabbit	RaFabL-1	pIII-fusion, Phagemid Phage Display	Naïve Fab	7.5×10^9	✓
	RaFabL-2	pIII-fusion, Phagemid Phage Display	Naïve Fab	1.2×10^{10}	✓
Chicken	Chicken-ScL-2	pIII-fusion, Phagemid Phage Display	Naïve scFv	1.1×10^{10}	✓
V _H H (Camel, Llama, Alpaca)	CaV _H HL-4	pIII-fusion, Phagemid Phage Display	Naïve V _H H	2.63×10^{10}	
	CaV _H HL-5	pIII-fusion, Phagemid Phage Display	Naïve V _H H	3.0×10^{10}	
	CaV _H HL-6	pIII-fusion, Phagemid Phage Display	Naïve V _H H	2.43×10^9	✓
	LlaV _H HL-1	pIII-fusion, Phagemid Phage Display	Naïve V _H H	2.0×10^9	✓
	LlaV _H HL-2	pIII-fusion, Phagemid Phage Display	Naïve V _H H	1.8×10^{10}	
	AIV _H HL-1	pIII-fusion, Phagemid Phage Display	Naïve V _H H	1.35×10^{10}	
	AIV _H HL-2	pIII-fusion, Phagemid Phage Display	Naïve V _H H	1.5×10^{11}	
	LlaV _H HL-S1	pIII-fusion, Phagemid Phage Display	Synthetic V _H H	1.5×10^{11}	
	CaV _H HL-S2	pIII-fusion, Phagemid Phage Display	Synthetic V _H H	5.4×10^{10}	
	CaV _H HL-S3	pIII-fusion, Phagemid Phage Display	Synthetic V _H H	2.2×10^{10}	
	CaV _H HL-S4	pIII-fusion, Phagemid Phage Display	Semi-synthetic V _H H	5.3×10^{10}	
Humanized V _H H	HuV _H HL-S1	pIII-fusion, Phagemid Phage Display	Synthetic V _H H	$>1.0 \times 10^{11}$	
	HuV _H HL-S2	pIII-fusion, Phagemid Phage Display	Semi-synthetic V _H H	$>1.0 \times 10^{10}$	



Premade Antibody Library Screening Service

- Functional Antibody Discovery from Premade Large Capacity Antibody Library
- Anti-Peptide/Protein Antibody Discovery from Premade Antibody Library
- Anti-Cell-Based Target Antibody Discovery from Premade Antibody Library
- Anti-Epitope Antibody Discovery from Premade Antibody Library
 - * TCR-Like Antibody Discovery from Premade Antibody Library
 - * Anti-Idiotypic Antibody Discovery from Premade Antibody Library
 - * Anti-PTM Antibody Discovery from Premade Antibody Library
- Anti-Disease-specific Target Antibody Discovery from Premade Antibody Library

Peptide Development *via* Premade Library

Premade Peptide Phage display Libraries

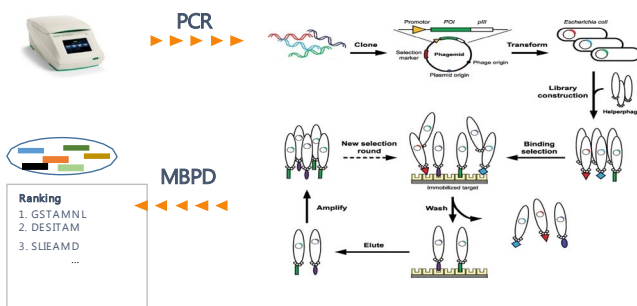
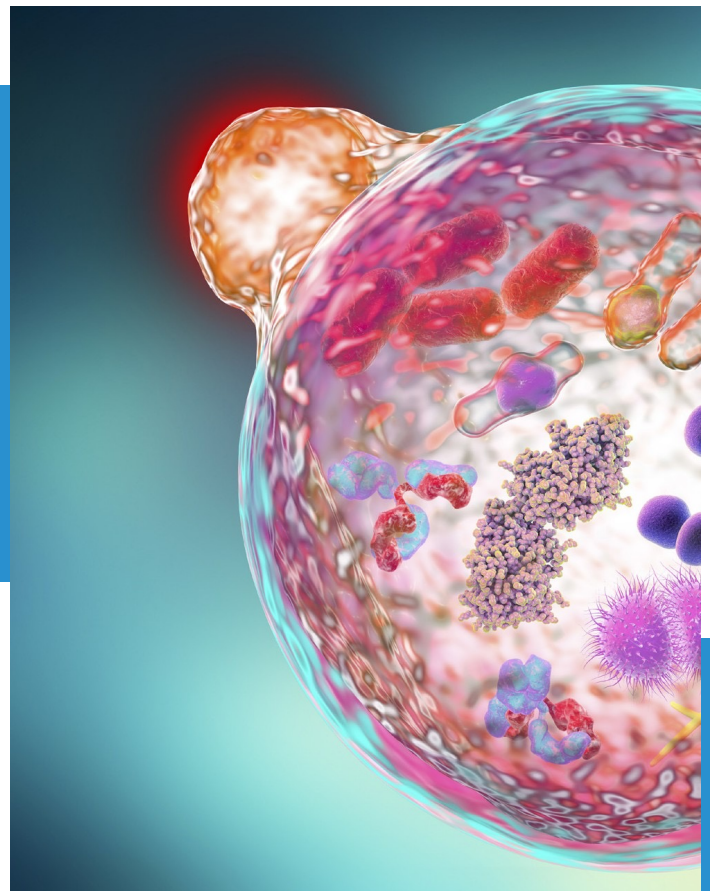
Phage-displayed peptide libraries are powerful in epitope mapping for antibodies, B cells, and T cells. The immune system will activate and trigger the production of antibodies directed against the foreign protein epitopes. Therefore it is pivotal in understanding the pathogenesis of pathogen infections and in developing diagnostic reagents, therapeutic antibodies, and effective vaccines.

Creative Biolabs has established a comprehensive list of peptide libraries for de novo discovering therapeutically relevant peptides. These well-tailored premade peptide libraries have made a powerful toolbox to streamline our clients' therapeutic/ diagnostic agent discovery pipeline.

Types	Peptide Library ID	Phage Display	Library Format	Library Size	Out-licensing
Linear	TriCo-16	pIII-fusion, True Phage Display	16-mer peptide library	1.1×10^{10}	✓
	TriCo-20	pIII-fusion, True Phage Display	20-mer peptide library	1.3×10^{10}	✓
Cyclic	TriCo-C9	pIII-fusion, Phagemid Phage Display	Cyclic 9-mer peptide library	1.10×10^{10}	✓
	TriCo-C9L	pIII-fusion, Phagemid Phage Display	Cyclic 9-mer peptide library	6.8×10^{10}	
Others	Protease-10A	pIII-fusion, Phagemid Phage Display	HiAffi tagged 10 mer peptide library	1.10×10^{10}	✓

Premade Peptide Library Screening Service

- Particulate Matter Binding Peptides Identification Service
- Soft Matter Binding Peptides Identification Services
- Cell-selective Peptides Discovery Service
- Epitope Target Specific Peptide Discovery Service
- CDR Regions Specific Peptide Discovery Service
- TCR Epitope Specific Peptide Discovery Service
- Disease-specific Peptides Discovery Service



Distributed by:
CliniSciences Group

CliniSciences Group

Austria

Company: CliniSciences GmbH
Address: Sternwartestrasse 76, A-1180
Wien - Austria
Telephone: +43 720 115 580
Fax: +43 720 115 577
Email: oesterreich@clinisciences.com
Web: <https://www.clinisciences.com>



Belgium

Company: CliniSciences S.R.L
Address: Avenue Stalingrad 52, 1000
Brussels - Belgium
Telephone: +32 2 31 50 800
Fax: +32 2 31 50 801
Email: belgium@clinisciences.com
Web: <https://www.clinisciences.com>



Denmark

Company: CliniSciences ApS
Address: Oesterbrogade 226, st. 1,
Copenhagen, 2100 - Denmark
Telephone: +45 89 888 349
Fax: +45 89 884 064
Email: denmark@clinisciences.com
Web: <https://www.clinisciences.com>



Finland

Company: CliniSciences ApS
Address: Oesterbrogade 226, st. 1,
Copenhagen, 2100 - Denmark
Telephone: +45 89 888 349
Fax: +45 89 884 064
Email: suomi@clinisciences.com
Web: <https://www.clinisciences.com>



France

Company: CliniSciences S.A.S
Address: 74 Rue des Suisses, 92000
Nanterre- France
Telephone: +33 9 77 40 09 09
Fax: +33 9 77 40 10 11
Email: info@clinisciences.com
Web: <https://www.clinisciences.com>



Germany

Company: Biotrend Chemikalien GmbH
Address: Wilhelm-Mauser-Str. 41-43,
50827 Köln - Germany
Telephone: +49 221 9498 320
Fax: +49 221 9498 325
Email: info@biotrend.com
Web: <https://www.biotrend.com>



Iceland

Company: CliniSciences ApS
Address: Oesterbrogade 226, st. 1,
Copenhagen, 2100 - Denmark
Telephone: +45 89 888 349
Fax: +45 89 884 064
Email: island@clinisciences.com
Web: <https://www.clinisciences.com>



Ireland

Company: CliniSciences Limited
Address: Ground Floor, 71 lower Baggot street
Dublin D02 P593 - Ireland
Telephone: +353 1 6971 146
Fax: +353 1 6971 147
Email: ireland@clinisciences.com
Web: <https://www.clinisciences.com>



Italy

Company: CliniSciences S.r.l
Address: Via Maremmana inferiore 378
Roma 00012 Guidonia Montecelio - Italy
Telephone: +39 06 94 80 56 71
Fax: +39 06 94 80 00 21
Email: italia@clinisciences.com
Web: <https://www.clinisciences.com>



Netherlands

Company: CliniSciences B.V.
Address: Kraijenhoffstraat 137A,
1018RG Amsterdam, Netherlands
Telephone: +31 85 2082 351
Fax: +31 85 2082 353
Email: nederland@clinisciences.com
Web: <https://www.clinisciences.com>



Norway

Company: CliniSciences AS
Address: c/o MerVerdi Munkeordtunet 10
1164 Oslo - Norway
Telephone: +47 21 988 882
Email: norge@clinisciences.com
Web: <https://www.clinisciences.com>



Poland

Company: CliniSciences sp.Z.o.o.
Address: ul. Rotmistrza Witolda Pileckiego 67
lok. 200 - 02-781 Warszawa -Poland
Telephone: +48 22 307 0535
Fax: +48 22 307 0532
Email: polska@clinisciences.com
Web: <https://www.clinisciences.com>



Portugal

Company: Quimigen Unipessoal LDA
Address: Rua Almada Negreiros, Lote 5, Loja 14,
2615-275 Alverca Do Ribatejo - Portugal
Telephone: +351 30 8808 050
Fax: +351 30 8808 052
Email: info@quimigen.com
Web: <https://www.quimigen.pt>



Spain

Company: CliniSciences Lab Solutions
Address: C/ Hermanos del Moral 13
(Bajo E), 28019, Madrid - Spain
Telephone: +34 91 269 40 65
Fax: +34 91 269 40 74
Email: espana@clinisciences.com
Web: <https://www.clinisciences.com>



Sweden

Company: CliniSciences ApS
Address: Oesterbrogade 226, st. 1,
Copenhagen, 2100 - Denmark
Telephone: +45 89 888 349
Fax: +45 89 884 064
Email: sverige@clinisciences.com
Web: <https://www.clinisciences.com>



Switzerland

Company: CliniSciences AG
Address: Fracht Ost Flughafen Kloten
CH-8058 Zürich - Switzerland
Telephone: +41 (044) 805 76 81
Fax: +41 (044) 805 76 75
Email: switzerland@clinisciences.com
Web: <https://www.clinisciences.com>



UK

Company: CliniSciences Limited
Address: 11 Progress Business center, Whittle
Parkway, SL1 6DQ Slough- United Kingdom
Telephone: +44 (0)1753 866 511
or +44 (0) 330 684 0982
Fax: +44 (0)1753 208 899
Email: uk@clinisciences.com
Web: <https://www.clinisciences.com>



USA

Company: Biotrend Chemicals LLC
Address: c/o Carr Riggs Ingram,
500 Grand Boulevard, Suite 210 Miramar
Beach, FL 32550- USA
Telephone: +1 850 650 7790
Fax: +1 850 650 4383
Email: info@biotrend-usa.com
Web: <https://www.biotrend-usa.com>

