

Universal Plant DNA & RNA Extraction

Providing Innovative Reagents for Life Sciences since 2006

EasyPure[®] Universal Plant Total RNA Kit (polysaccharides and polyphenols)(ER302)

Features

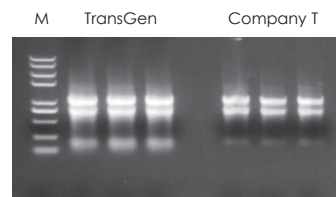
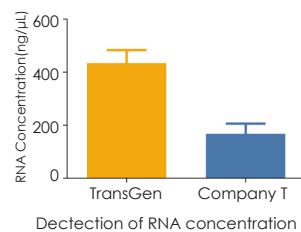
- Wide range of applications: Applicable to various plant tissues, especially those rich in polysaccharides, polyphenols or starch;
- Fast operation: High-quality RNA can be extracted in less than 30 minutes;
- Safe and low toxicity: No toxic organic reagents such as phenol and chloroform;
- High purity: The unique technology can efficiently remove impurities such as pigments, polyphenols and polysaccharides in the sample.



Experiment Data

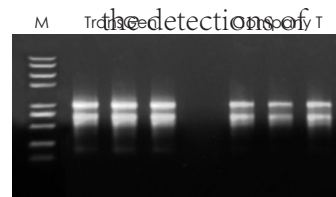
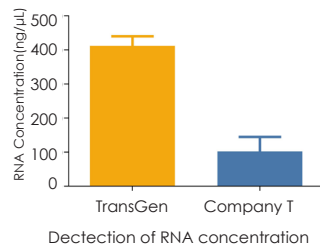
Wide range of applications

Tea leaves



M: Trans2K[®] Plus II DNA Marker
Detection of agarose gel electrophoresis

Soybean seed

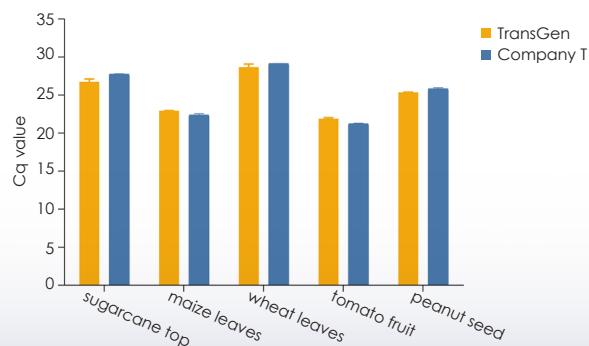


M: Trans2K[®] Plus II DNA Marker
Detection of agarose gel electrophoresis

RNA was extracted from 100 mg of different plant samples using TransGen and Company T products, and the detections of RNA concentration and agarose gel electrophoresis were performed. The results showed that the extraction effect of TransGen products was better than that of competitors.

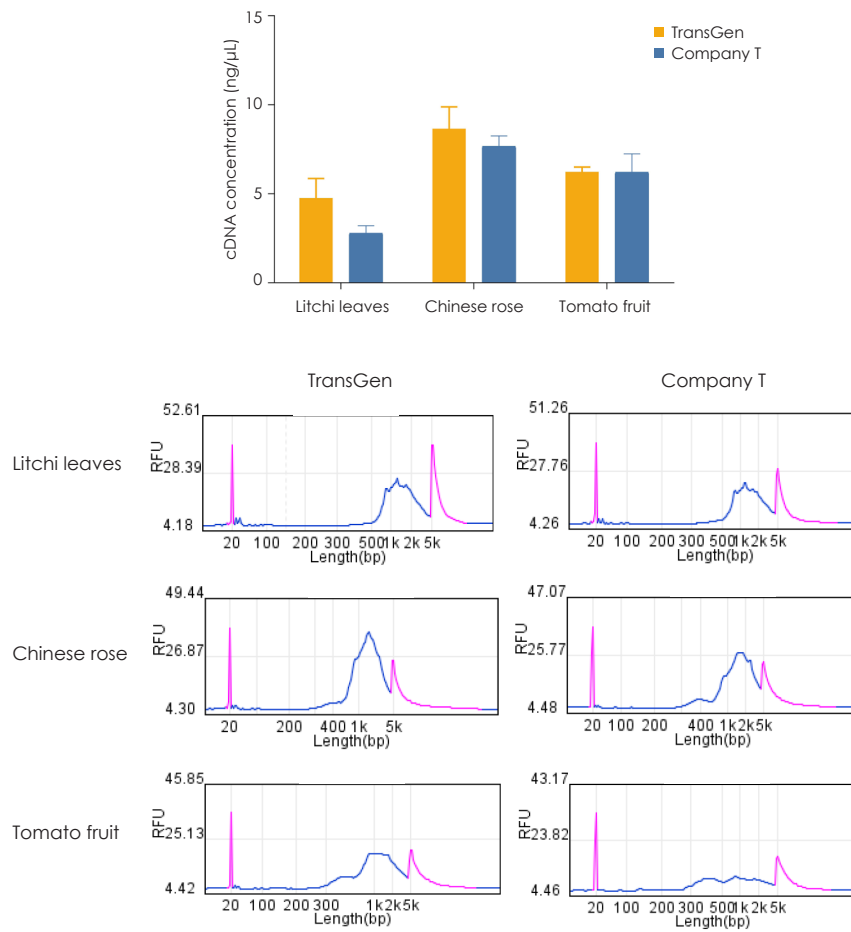
Applicable for various of downstream detections

qRT-PCR detection



TransGen and Company T products were used to extract RNA from different plant samples, and RNA was used as a template for one-step qRT-PCR testing (AQ311). The results showed that TransGen products had no inhibitory effect on qPCR amplification and can be used for downstream qPCR testing.

Full-length cDNA synthesis and amplification



TransGen and Company T products were used to extract RNA from different plant samples, and full-length cDNA was synthesized using RNA as a template (KC901). The results showed that the quality of RNA extracted by TransGen products was good, and the peak shape of cDNA after amplification was good, which was suitable for full-length cDNA synthesis and amplification.

Extraction amount of tested samples

Type of sample		Sample amount (mg)	RNA extraction amount (μg)
Leaves tissue	Tobacco	100	15-20
	Wheat		20-30
	Maize		20-40
	Tea leaves		30-50
	Litchi		10-20
	Sugarcane		15-20
	Cotton		15-30
	Aloe		0.3-0.8
	Holly		1-5
	Pine tree coniferous leaves		1-5
Root issue	Maize	10-20	
	Tobacco	4-8	
Tuber issue	Potato	30-40	
Petal	Chinese rose	10-20	
Fruit	Grape	200	4-7
	Tomato		4-7
Seed	Soybean	100	30-50
	Peanut		40-60

EasyPure[®] Universal Plant Genomic DNA Kit (EE112)

Features

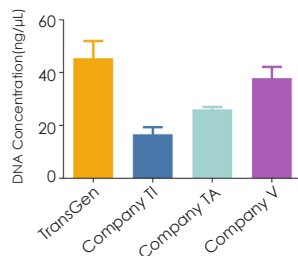
- Wide range of applications: Applicable to various plant tissues, especially those rich in polysaccharides, polyphenols or starch;
- Fast operation: High-quality genomic DNA can be extracted in less than 1 hour;
- Safe and low toxicity: No toxic organic reagents such as phenol and chloroform;
- High purity: The unique technology can efficiently remove impurities such as pigments, polyphenols and polysaccharides in the sample, lower inhibition of PCR



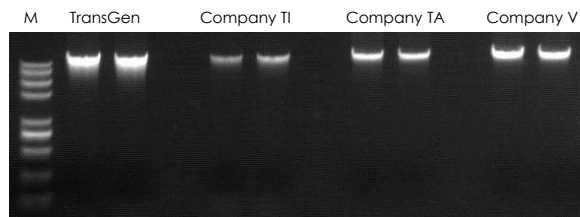
Experiment Data

Wide range of applications

Tobacco leaves



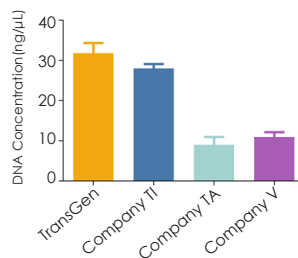
Detection of DNA concentration



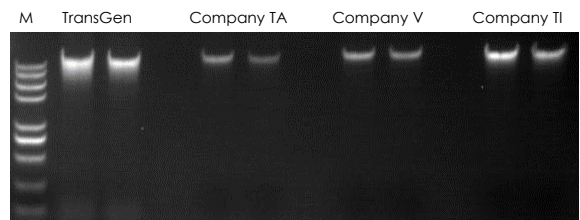
M: Trans2K[®] Plus II DNA Marker

Detection of Agarose gel electrophoresis

Litchi leaves



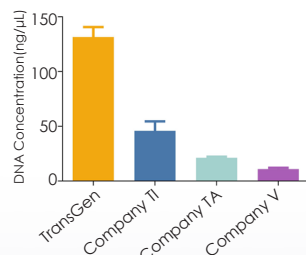
Detection of DNA concentration



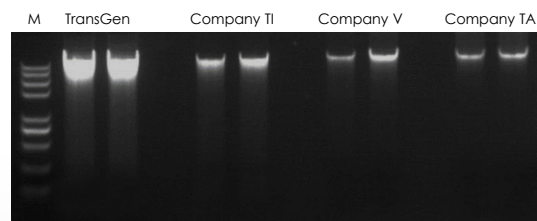
M: Trans2K[®] Plus II DNA Marker

Detection of agarose gel electrophoresis

Sugarcane leaves



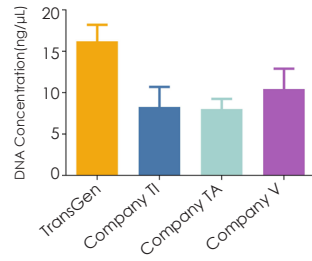
Detection of DNA concentration



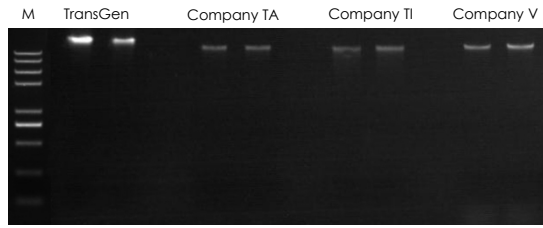
M: Trans2K[®] Plus II DNA Marker

Detection of agarose gel electrophoresis

Pine tree coniferous leaves



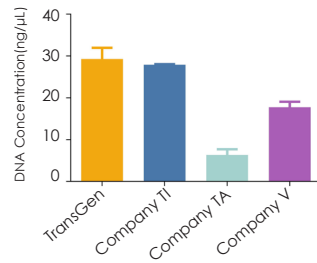
Detection of DNA concentration



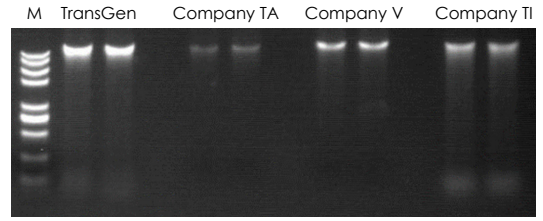
M: Trans2k[®] Plus II DNA Marker

Detection of agarose gel electrophoresis

Maize root



Detection of DNA concentration



M: Trans2k[®] Plus II DNA Marker

Detection of agarose gel electrophoresis

Extraction amount of tested samples

Type of sample		Sample amount (mg)	DNA extraction amount (μg)
Leaves tissue	Tea leaves	100	4-6
	Litchi		0.5-0.7
	Sugarcane		7-8
	Sweet corn		5-8
	Tobacco		2-3
	Wheat		9-10
	Cotton		3-5
	Soybean		6-7
	Rice		3-5
	Holly		0.5-0.6
	Pine tree coniferous leaves		0.5-0.6
Root issue	Cotton	100	0.6-0.8
	Maize	150	0.5-0.7
Petal	Chinese rose	200	0.4-0.7
	Lily	100	0.2-0.4
Fruit	Litchi	200	0.2-0.3
Seed	Soybean	100	0.2-0.3
	Cotton germ	40	1-2

Product Information

Product Name	Cat.No.	Specification
EasyPure [®] Universal Plant Total RNA Kit	ER302-01	50 rxns
	ER302-02	200 rxns
EasyPure [®] Universal Plant Genomic DNA Kit	EE112-01	50 rxns
	EE112-02	200 rxns



TRANSGEN BIOTECH CO., LTD.

Website www.transgenbiotech.com
Phone +86-10-57815030

Customer Service +86-400-898-0321
E-mail custserv@transgenbiotech.com