

**GABA-A Receptor Beta3 Antibody**  
**GABA A Receptor Beta3 Antibody, Clone S87-25**  
**Catalog # ASM10215**

## Specification

---

### GABA-A Receptor Beta3 Antibody - Product Information

Application	<b>WB</b>
Primary Accession	<a href="#">P63080</a>
Other Accession	<a href="#">NP_032097.1</a>
Host	<b>Mouse</b>
Isotype	<b>IgG1</b>
Reactivity	<b>Human, Mouse, Rat</b>
Clonality	<b>Monoclonal</b>

#### Description

Mouse Anti-Mouse GABA-A Receptor Beta3 Monoclonal IgG1

#### Target/Specificity

Detects ~55kDa. No cross-reactivity against GABA-A-R-Beta 2 or -Beta1.

#### Other Names

ECA5 antibody, GABA alpha receptor beta-2 subunit antibody, GABA(A) receptor subunit beta-3 antibody, GABAA receptor beta 3 subunit antibody, GABAA receptor subunit beta 3 antibody, GABRB3 antibody, Gabrb3 antibody, Gamma aminobutyric acid (GABA) A receptor beta 3 antibody, Gamma aminobutyric acid receptor subunit beta 3 antibody, Gamma-aminobutyric acid receptor subunit beta-3 antibody, GBRB3\_HUMAN antibody, MGC9051 antibody

#### Immunogen

Fusion protein amino acids 370-433 of mouse GABA-A-R-Beta3

#### Purification

Protein G Purified

Storage **-20°C**

#### Storage Buffer

PBS pH7.4, 50% glycerol, 0.09% sodium azide

Shipping Temperature **Blue Ice or 4°C**

#### Certificate of Analysis

1 µg/ml of SMC-339 was sufficient for detection of Beta3 GABA receptor in 10 µg of rat brain lysate by colorimetric immunoblot analysis using goat anti-mouse IgG:HRP as the secondary antibody.

#### Cellular Localization

Cell Membrane | Cell Junction | Synapse | Postsynaptic Cell Membrane

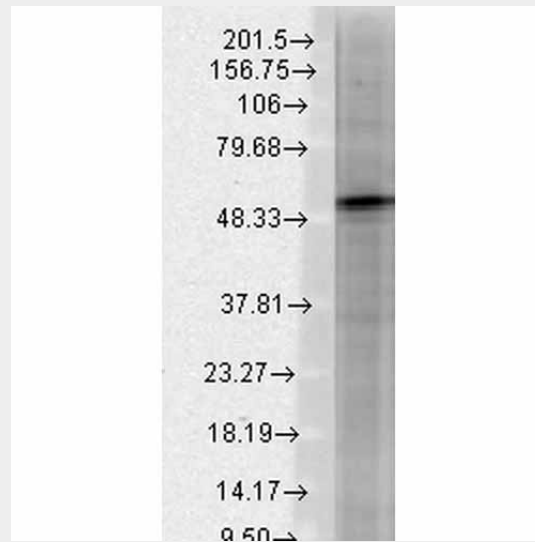
### GABA-A Receptor Beta3 Antibody - Protocols

Provided below are standard protocols that you may find useful for product applications.

- [Western Blot](#)

- [Blocking Peptides](#)
- [Dot Blot](#)
- [Immunohistochemistry](#)
- [Immunofluorescence](#)
- [Immunoprecipitation](#)
- [Flow Cytometry](#)
- [Cell Culture](#)

### GABA-A Receptor Beta3 Antibody - Images



Western Blot analysis of Rat brain membrane lysate showing detection of GABA A Receptor protein using Mouse Anti-GABA A Receptor Monoclonal Antibody, Clone S87-25 (ASM10215). Load: 15  $\mu$ g. Block: 1.5% BSA for 30 minutes at RT. Primary Antibody: Mouse Anti-GABA A Receptor Monoclonal Antibody (ASM10215) at 1:1000 for 2 hours at RT. Secondary Antibody: Sheep Anti-Mouse IgG: HRP for 1 hour at RT.

### GABA-A Receptor Beta3 Antibody - Background

The GABA-A receptor is a member of the superfamily of fast acting ligand-gated ion channels. The individual subunits of these receptors have similar sequences and structural features (1). GABA-A receptors are the major fast inhibitory neurotransmitter gated ion channels in the brain (2).

### GABA-A Receptor Beta3 Antibody - References

1. Bracamontes J.R. and Steinbach J.H. (2008) J Bio Chem. 283: 26128-26136.
2. Macdonald R.L., Olsen R.W. (1993) Annu Rev Neurosci. 17: 569-602.