

## MYL2 antibody

### Product Information

Catalog No.:	FNab05519
Size:	100µg
Form:	liquid
Purification:	Immunogen affinity purified
Purity:	≥95% as determined by SDS-PAGE
Host:	Rabbit
Clonality:	polyclonal
Clone ID:	None
IsoType:	IgG
Storage:	PBS with 0.02% sodium azide and 50% glycerol pH 7.3, -20°C for 12 months(Avoid repeated freeze / thaw cycles.)

### Background

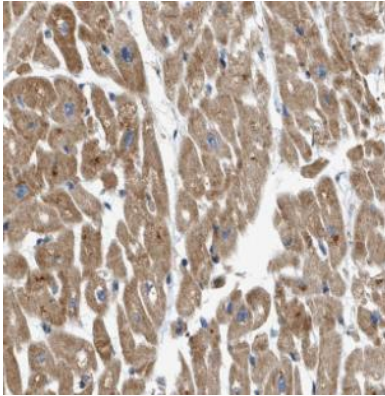
None

### Immunogen information

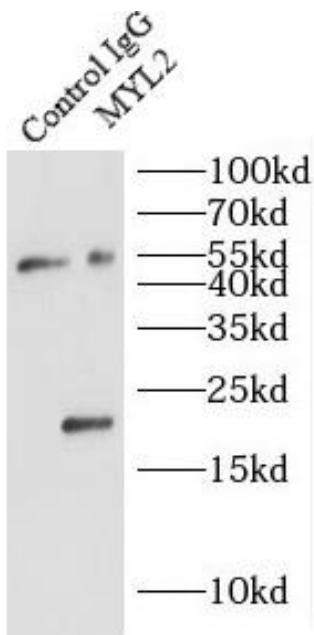
Immunogen:	myosin, light chain 2, regulatory, cardiac, slow
Synonyms:	Myosin regulatory light chain 2, ventricular/cardiac muscle isoform (MLC-2, MLC-2v) Cardiac myosin light chain 2 Myosin light chain 2, slow skeletal/ventricular muscle isoform (MLC-2s/v) Ventricular myosin light chain 2 MYL2 MLC2
Observed MW:	19 kDa
Uniprot ID :	P10916

### Application

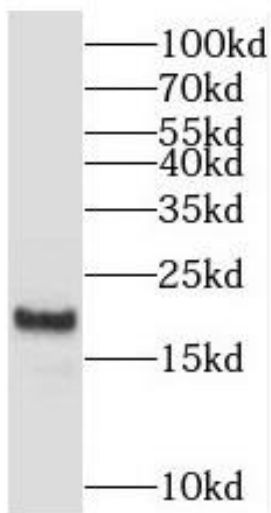
Reactivity:	Human, Mouse, Rat, Zebrafish
Tested Application:	ELISA, WB, IP, IHC
Recommended dilution:	WB: 1:500-1:2000; IP: 1:200-1:1000; IHC: 1:20-1:200
Image:	



Immunohistochemistry of paraffin-embedded human heart tissue slide using FNab05519(MYL2 Antibody) at dilution of 1:200



IP Result of anti-Myosin Light Chain 2 (IP:FNab05519, 3ug; Detection:FNab05519 1:500) with mouse heart tissue lysate 6000ug.



mouse heart tissue were subjected to SDS PAGE followed by western blot with FNab05519(MYL2 antibody) at dilution of 1:1000