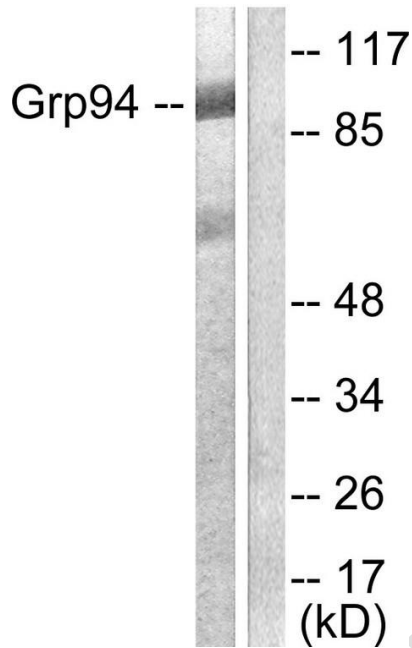


Anti-HSP90B1 antibody (730-810 C-Term)

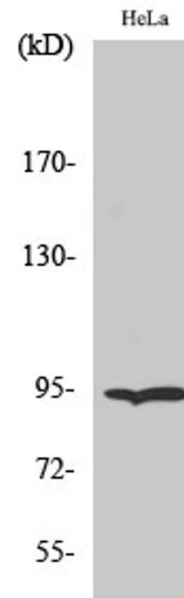
Cat # NB-22-2924-20 size: 20µg

Cat # NB-22-2924-50 size: 50µg

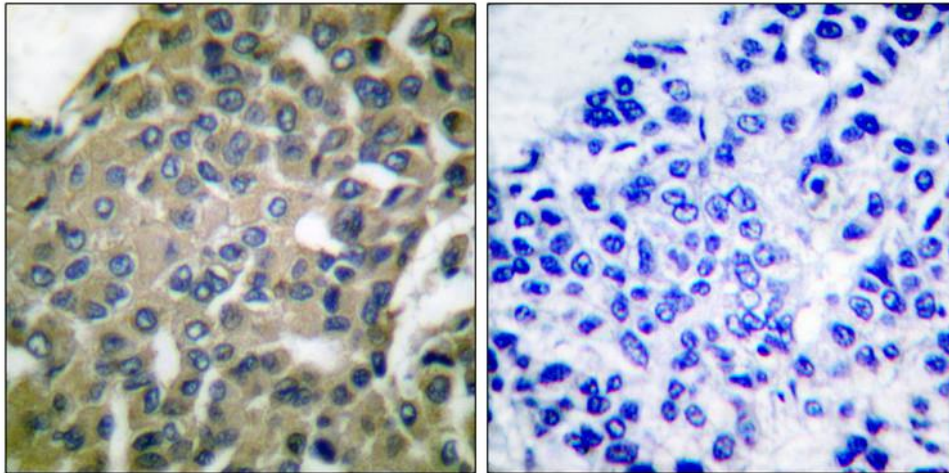
Cat # NB-22-2924 size: 100µg



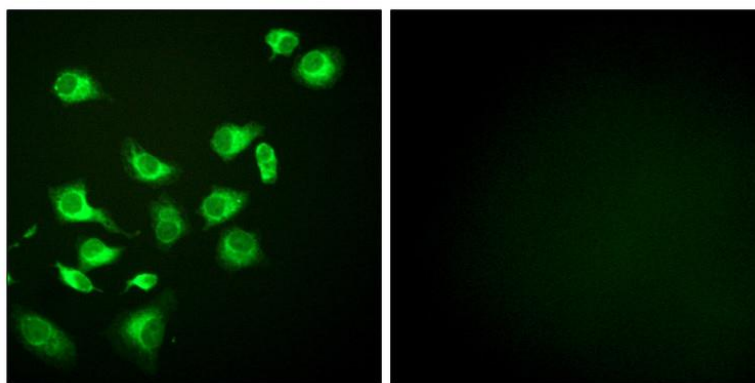
Western blot analysis of lysates from SKOV3 cells, using GRP94 Antibody. The lane on the right is blocked with the synthesized peptide.



Western blot analysis of HeLa cells using Endoplasmic Reticulum Polyclonal Antibody diluted at 1 : 1000



Immunohistochemistry analysis of paraffin-embedded human breast carcinoma tissue, using GRP94 Antibody. The picture on the right is blocked with the synthesized peptide.



Immunofluorescence analysis of HepG2 cells, using GRP94 Antibody. The picture on the right is blocked with the synthesized peptide.

Description

Rabbit polyclonal antibody anti-Endoplasmic (730-810 C-Term) is suitable for use in Western Blot, Immunohistochemistry, Immunofluorescence, Immunocytochemistry and ELISA research applications.

Product Information

Host:	Rabbit
Applications:	WB, IHC-P, IF, ICC, ELISA
Reactivity:	Human, Mouse
Clonality:	Polyclonal
Conjugation:	Unconjugated
Isotype:	IgG
Formulation:	PBS, 50% Glycerol, 0.5% BSA and 0.02% Sodium Azide.
Purification:	The antibody was affinity-purified from rabbit anti-serum by affinity-chromatography.
Concentration:	1 mg/mL
Dilution Range:	WB 1:500-1:2000 IHC 1:100-1:300 IF 1:200-1:1000 ELISA 1:20000
Storage Instruction:	Store at -20°C for up to 1 year from the date of receipt, and avoid repeat freeze-thaw cycles.

Target

Gene Symbol:	HSP90B1
Gene ID:	7184
Uniprot ID:	ENPL_HUMAN
Immunogen Region:	730-810 C-Term
Specificity:	HSP90B1 polyclonal antibody (Endoplasmic) binds to endogenous Endoplasmic at the amino acid region 730-810 C-Term.
Immunogen:	The antiserum was produced against synthesized peptide derived from human GRP94 at amino acid range 754-803

***For reference only
For Research Use Only. Not for Diagnostic or Therapeutic Use.***