

---

## CRP Antibody

Cat # NB-19-0023

---

### Immunogen Data

**Description:**

C-reactive protein displays several functions associated with host defense: it promotes agglutination, bacterial capsular swelling, phagocytosis and complement fixation through its calcium-dependent binding to phosphorylcholine. CRP protein can interact with DNA and histones and may scavenge nuclear material released from damaged circulating cells.

**Immunogen:** C-reactive protein from human pleural fluid.

**Alternative names:** PTX1

**UniProt ID:** P02741

**Mol. Weight:** ≈23 KDa

---

### Antibody Data

**Host:** Goat

**Clonality:** Polyclonal

**Species Reactivity:** Human. Its reactivity against other species has not been determined.

**Quantity:** 50 mg

**Purity:** Affinity purified polyclonal goat serum.

**Form:** Lyophilized. Reconstitute with dH<sub>2</sub>O up to 25 mg/ml.

**Appearance:** Crystallized powder. Colorless solution after resuspension up to 25 mg/ml.

**Storage Buffer:** PBS and sucrose.

**Storage Instruction:** Keep lyophilized until ready to use stored at -20°C. Aliquots should be stored at -20°C or -80°C. Avoid freeze-thaw cycles.

---

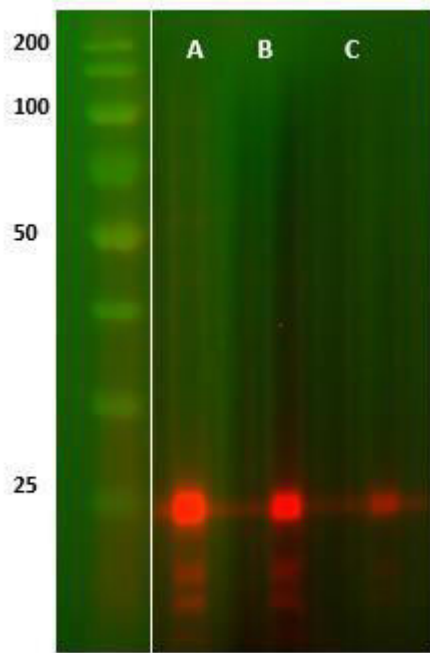
### Applications

**Tested Applications:** ELISA and Western Blot. The usefulness of this product in other applications has not been determined.

**Recommended Dilutions:**

**ELISA:** 1:5.000 to 1:50.000 using the antibody at an initial concentration of 1 mg/ml.

**WB:** 1:2.000 to 1:30.000 using the antibody at an initial concentration of 1 mg/ml.



CRP-antibody western blot analysis. Dilutions tested: 1/10.000 (line A), 1/20.000 (line B) and 1/50.000 (line C) using the antibody at an initial concentration of 1 mg/ml

For Research Use Only. Not for Diagnostic or Therapeutic Use.