

Kir2.1 Antibody
Kir2.1 Antibody, Clone S112B-14
Catalog # ASM10188

Specification

Kir2.1 Antibody - Product Information

Application	IHC, WB
Primary Accession	P35561
Other Accession	NP_032451
Host	Mouse
Isotype	IgG1
Reactivity	Human, Mouse, Rat, Monkey
Clonality	Monoclonal

Description

Mouse Anti-Mouse Kir2.1 Monoclonal IgG1

Target/Specificity

Detects ~45kDa. No cross-reactivity against Kir2.2 or Kir2.3.

Other Names

HHBIRK1 Antibody, HHIRK1 Antibody, HIRK 1 Antibody, IRK1 Antibody, KCNJ2 Antibody, LQT7 Antibody, SQT3 Antibody, potassium inwardly rectifying channel J2 Antibody

Immunogen

Fusion protein amino acids 41-64 and 189-428 of mouse Kir2.1

Purification

Protein G Purified

Storage **-20°C**

Storage Buffer

PBS pH7.4, 50% glycerol, 0.09% sodium azide

Shipping Temperature **Blue Ice or 4°C**

Certificate of Analysis

1 µg/ml of SMC-310 was sufficient for detection of Kir2.1 in 10 µg of rat brain lysate by colorimetric immunoblot analysis using Goat anti-mouse IgG:HRP as the secondary antibody.

Cellular Localization

Membrane

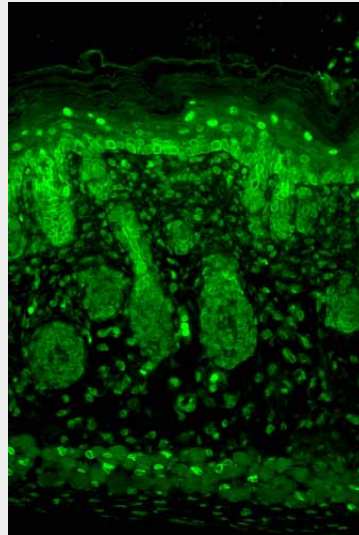
Kir2.1 Antibody - Protocols

Provided below are standard protocols that you may find useful for product applications.

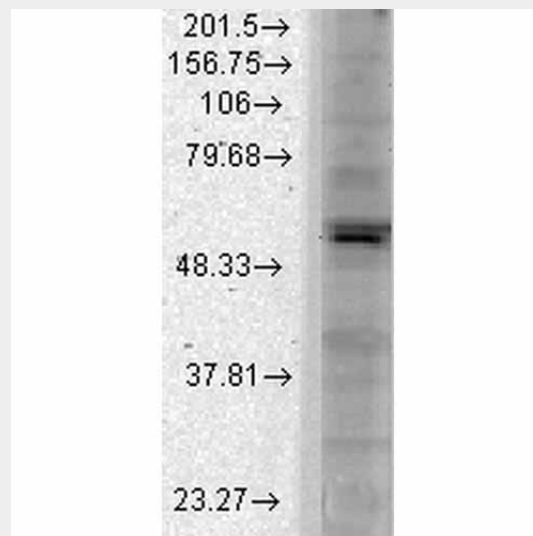
- [Western Blot](#)
- [Blocking Peptides](#)
- [Dot Blot](#)
- [Immunohistochemistry](#)

- [Immunofluorescence](#)
- [Immunoprecipitation](#)
- [Flow Cytometry](#)
- [Cell Culture](#)

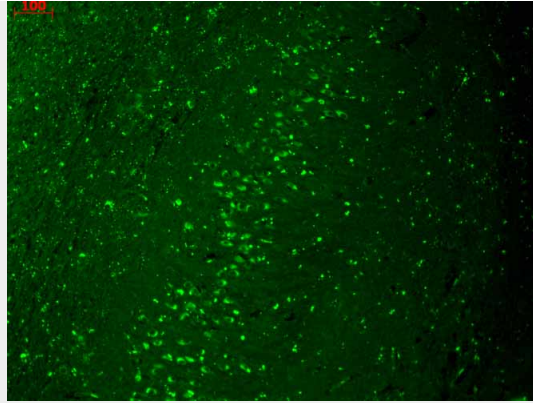
Kir2.1 Antibody - Images



Immunohistochemistry analysis using Mouse Anti-Kir2.1 Potassium Channel Monoclonal Antibody, Clone S112B-14 (ASM10188). Tissue: backskin. Species: Mouse. Fixation: Bouin's Fixative and paraffin-embedded. Primary Antibody: Mouse Anti-Kir2.1 Potassium Channel Monoclonal Antibody (ASM10188) at 1:100 for 1 hour at RT. Secondary Antibody: FITC Goat Anti-Mouse (green) at 1:50 for 1 hour at RT. Localization: Nuclear expression in the epidermis and hair follicles.



Western Blot analysis of Monkey COS transient cell lysate showing detection of Kir2.1 Potassium Channel protein using Mouse Anti-Kir2.1 Potassium Channel Monoclonal Antibody, Clone S112B-14 (ASM10188). Load: 15 µg. Block: 1.5% BSA for 30 minutes at RT. Primary Antibody: Mouse Anti-Kir2.1 Potassium Channel Monoclonal Antibody (ASM10188) at 1:1000 for 2 hours at RT. Secondary Antibody: Sheep Anti-Mouse IgG: HRP for 1 hour at RT.



Immunohistochemistry analysis using Mouse Anti-Kir2.1 Potassium Channel Monoclonal Antibody, Clone S112B-14 (ASM10188). Tissue: hippocampus. Species: Human. Fixation: Bouin's Fixative and paraffin-embedded. Primary Antibody: Mouse Anti-Kir2.1 Potassium Channel Monoclonal Antibody (ASM10188) at 1:1000 for 1 hour at RT. Secondary Antibody: FITC Goat Anti-Mouse (green) at 1:50 for 1 hour at RT.

Kir2.1 Antibody - Background

The Kir2.1 inward-rectifier potassium ion channel is encoded by the KCNJ2 gene. A defect in this gene is associated with Andersen-Tawil syndrome (1).

Kir2.1 Antibody - References

1. Donaldson M.R., Yoon G., Fu Y.H., Ptacek L.J. (2004). Ann. Med. 36 Suppl 1: 92-7.