

mGluR1/5 glutamate receptor Antibody
MGluR1/5 Antibody, Clone S75-33
Catalog # ASM10253

Specification

mGluR1/5 glutamate receptor Antibody - Product Information

Application	WB
Primary Accession	P31424
Other Accession	NP_058708.1
Host	Mouse
Isotype	IgG2A
Reactivity	Human, Mouse, Rat
Clonality	Monoclonal
Format	FITC

Description

Mouse Anti-Rat mGluR1/5 glutamate receptor Monoclonal IgG2A

Target/Specificity

Detects ~130kDa (both mGluR1 and mGluR5).

Other Names

mGluR Antibody, metabotropic glutamate receptor 5 Antibody, metabotropic glutamate receptor 1 Antibody, mGlu5 Antibody, mGlu1 Antibody, mGluR5 Antibody, mGluR1 Antibody, GPRC1E Antibody, GRM5 Antibody, Metabotropic glutamate receptor 5 variant F Antibody, Metabotropic glutamate receptor 5 variant G Antibody, Metabotropic glutamate receptor 5 variant H Antibody, Glutamate receptor metabotropic 5 Antibody

Immunogen

Fusion protein amino acids 824-1203 (cytoplasmic C-terminus) of rat mGluR5b

Purification

Protein G Purified

Storage -20°C

Storage Buffer

PBS pH7.4, 50% glycerol, 0.09% sodium azide

Shipping Temperature **Blue Ice or 4°C**

Certificate of Analysis

1 µg/ml of SMC-419 was sufficient for detection of mGluR1/5 glutamate receptor in 20 µg of rat brain membrane lysate and assayed by colorimetric immunoblot analysis using goat anti-mouse IgG:HRP as the secondary antibody.

Cellular Localization

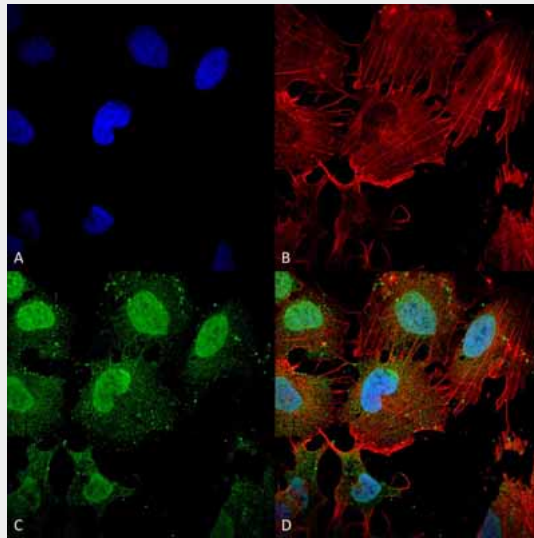
Cell Membrane

mGluR1/5 glutamate receptor Antibody - Protocols

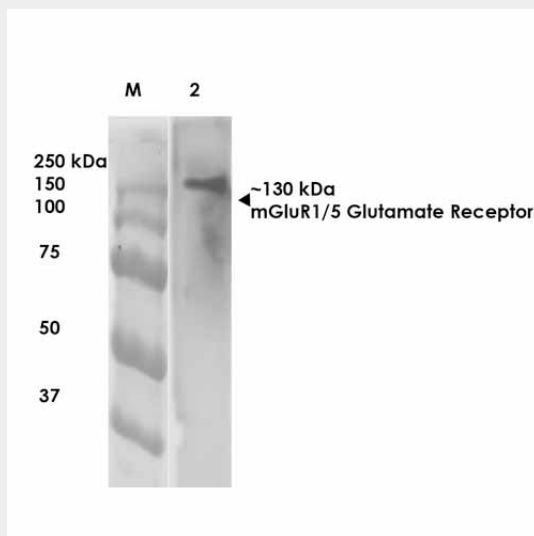
Provided below are standard protocols that you may find useful for product applications.

- [Western Blot](#)
- [Blocking Peptides](#)
- [Dot Blot](#)
- [Immunohistochemistry](#)
- [Immunofluorescence](#)
- [Immunoprecipitation](#)
- [Flow Cytometry](#)
- [Cell Culture](#)

mGluR1/5 glutamate receptor Antibody - Images



Immunocytochemistry/Immunofluorescence analysis using Mouse Anti-mGluR1/5 glutamate receptor Monoclonal Antibody, Clone S75-3 (ASM10253). Tissue: Neuroblastoma cell line (SK-N-BE). Species: Human. Fixation: 4% Formaldehyde for 15 min at RT. Primary Antibody: Mouse Anti-mGluR1/5 glutamate receptor Monoclonal Antibody (ASM10253) at 1:100 for 60 min at RT. Secondary Antibody: Goat Anti-Mouse ATTO 488 at 1:200 for 60 min at RT. Counterstain: Phalloidin Texas Red F-Actin stain; DAPI (blue) nuclear stain at 1:1000, 1:5000 for 60 min at RT, 5 min at RT. Localization: Cell Membrane, Cytoplasm, Nucleus. Magnification: 60X.



Western Blot analysis of Rat Brain Membrane showing detection of ~130 kDa mGluR5 protein using Mouse Anti-mGluR5 Monoclonal Antibody, Clone S75-33 (ASM10253). Lane 1: Molecular

Weight (MW) Ladder. Lane 2: Rat Brain Membrane. Load: 10 µg. Block: 5% milk. Primary Antibody: Mouse Anti-mGluR5 Monoclonal Antibody (ASM10253) at 1:1000 for 1 hour at RT. Secondary Antibody: Goat Anti-Mouse IgG: HRP at 1:200 for 1 hour at RT. Color Development: TMB solution for 10 min at RT. Predicted/Observed Size: ~130 kDa.

mGluR1/5 glutamate receptor Antibody - Background

The AMPA receptor is a non-NMDA-type ionotropic transmembrane receptor for glutamate that mediates fast synaptic transmission in the CNS. AMPARs are composed of four types of subunits, designated as GluR1, GluR2, GluR3 and GluR4, which combine to form tetramers (1, 2).

mGluR1/5 glutamate receptor Antibody - References

1. Mayer M.L. (2005) Current Opinion in Neurobio. 15(3): 282-288.
2. Keinane K., et al. (1990) Science. 249: 556-560.