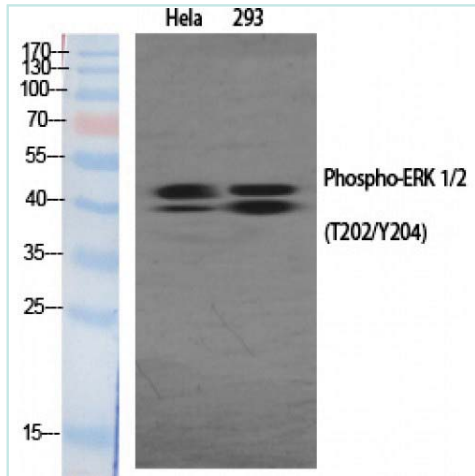


Phospho-ERK 1/2 (T202/Y204) antibody



Product Description

Rabbit Polyclonal to Phospho-ERK 1/2 (T202/Y204).

Product Information

Code:	NB-22-1357
Clonality	Polyclonal
Host	Rabbit
Reactivity	Human, Mouse, Rat
Applications	WB, IHC, ELISA
Immunogen	Synthesized peptide derived from human ERK 1/2 around the phosphorylation site of T202 and Y204.
Immunogen Region	140-220aa
Conjugation	Unconjugated
Gene ID	5595/5594 (Human); 26417/26413 (Mouse); 50689/116590 (Rat)
Isotype	IgG
Dilution range	WB 1:500-1:2000; IHC 1:100-1:300; ELISA 1:20000;
Specificity	Phospho-ERK 1/2 (T202/Y204) Polyclonal Antibody detects endogenous levels of ERK 1/2 protein only when phosphorylated at T202 or Y204.
Swiss-Prot Key	P27361/P28482 (Human); Q63844/P63085 (Mouse); P21708/P63086 (Rat)
Purification	The antibody was affinity-purified from rabbit antiserum by affinity-chromatography using epitope-specific immunogen.
Form	Liquid in PBS containing 50% glycerol, 0.5% BSA and 0.02% sodium azide.
Molecular Weight	42/44 kDa
Concentration	1 mg/ml
Storage	Store at -20°C. Avoid repeated freeze/thaw cycles.
Alternative names	MAPK3; ERK1; PRKM3; Mitogen-activated protein kinase 3; MAP kinase 3; MAPK 3; ERT2; Extracellular signal-regulated kinase 1; ERK-1; Insulin-stimulated MAP2 kinase; MAP kinase isoform p44; p44-MAPK; Microtubule-associated protein 2 kinase; p
Note	For research use only.