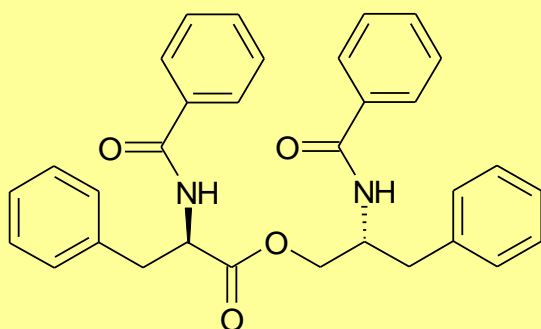


## Asperphenamate

Cat.# BLK1240

## Structure



Origin: Aspergillus sp.

CAS Registry Number: 63631-36-7

CA Index Name:

Appearance: off white solid

Molecular Formula/ Weight:

C<sub>32</sub>H<sub>30</sub>N<sub>2</sub>O<sub>4</sub>=506.60

Melting Point: 214-215°C Purity:&gt;95.0% by HPLC

Solubility: Sol. in 1mg/ml ethanol, methanol, DMSO

pKa:

log P:

## Background Information:

Asperphenamate, N,N'-substituted phenylalanine-phenylalaninol ester framework, was isolated from *Aspergillus flavus*. This compound shows activity against human cancer cell lines. And it inhibits the growth of breast cancer T47D and MDA-MB-231 cell lines.

## Handling and Storage:

Store at -20°C.

## References:

1. Lloydia. 1977 Mar-Apr;40(2):146-51.
2. J Immunol Methods. 1983 Dec 16;65(1-2):55-63.
3. Chem Pharm Bull (Tokyo). 2004 Mar;52(3):345-9.
4. Toxicol Appl Pharmacol. 2012 Aug 15;263(1):21-31.
5. Bioorg Med Chem Lett. 2012 Mar 15;22(6):2216-20.

Manufactured with Cortesy strain from The Kitasato Institute.