

BRCC3 antibody

Product Information

Catalog No.:	FNab00945
Size:	100µg
Form:	liquid
Purification:	Immunogen affinity purified
Purity:	≥95% as determined by SDS-PAGE
Host:	Rabbit
Clonality:	polyclonal
Clone ID:	None
IsoType:	IgG
Storage:	PBS with 0.02% sodium azide and 50% glycerol pH 7.3, -20°C for 12 months(Avoid repeated freeze / thaw cycles.)

Background

Metalloprotease that specifically cleaves 'Lys-63'-linked polyubiquitin chains(PubMed:19214193, PubMed:20656690, PubMed:24075985, PubMed:26344097). Does not have activity toward 'Lys-48'-linked polyubiquitin chains. Component of the BRCA1-A complex, a complex that specifically recognizes 'Lys-63'-linked ubiquitinated histones H2A and H2AX at DNA lesions sites, leading to target the BRCA1-BARD1 heterodimer to sites of DNA damage at double-strand breaks(DSBs). In the BRCA1-A complex, it specifically removes 'Lys-63'-linked ubiquitin on histones H2A and H2AX, antagonizing the RNF8-dependent ubiquitination at double-strand breaks(DSBs)(PubMed:20656690). Catalytic subunit of the BRISC complex, a multiprotein complex that specifically cleaves 'Lys-63'-linked ubiquitin in various substrates(PubMed:20656690, PubMed:24075985, PubMed:26344097, PubMed:26195665). Mediates the specific 'Lys-63'-specific deubiquitination associated with the COP9 signalosome complex(CSN), via the interaction of the BRISC complex with the CSN complex(PubMed:19214193). The BRISC complex is required for normal mitotic spindle assembly and microtubule attachment to kinetochores via its role in deubiquitinating NUMA1(PubMed:26195665). Plays a role in interferon signaling via its role in the deubiquitination of the interferon receptor IFNAR1; deubiquitination increases IFNAR1 activity by enhancing its stability and cell surface expression(PubMed:24075985, PubMed:26344097). Down-regulates the response to bacterial lipopolysaccharide(LPS) via its role in IFNAR1 deubiquitination(PubMed:24075985).

Immunogen information

Immunogen: BRCA1/BRCA2-containing complex, subunit 3

Synonyms: Lys-63-specific deubiquitinase BRCC36|BRCA1-A complex subunit
BRCC36|BRCA1/BRCA2-containing complex subunit
3|BRCA1/BRCA2-containing complex subunit 36|BRISC complex
subunit BRCC36|BRCC3|BRCC36|C6.1A|CXorf53

Observed MW: 65-70 kDa

Uniprot ID : P46736

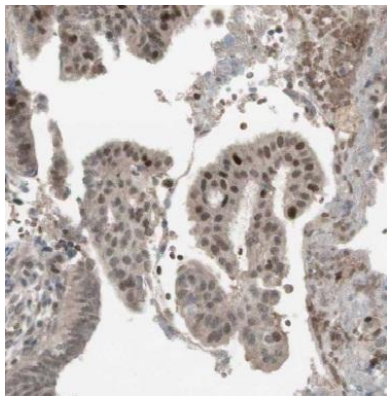
Application

Reactivity: Human, Mouse, Rat, Monkey

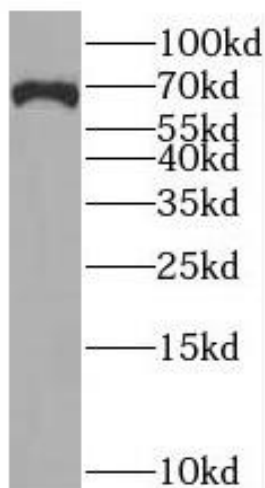
Tested Application: ELISA, WB, IHC

Recommended dilution: WB: 1:500-1:2000; IHC: 1:20-1:200

Image:



Immunohistochemistry of paraffin-embedded human ovary using FNab00945(BRCC3 antibody) at dilution of 1:50



MCF7 cells were subjected to SDS PAGE followed by western blot with FNab00945(BRCC3 antibody) at dilution of 1:300