

## NBR1 antibody

### Product Information

Catalog No.:	FNab05568
Size:	100µg
Form:	liquid
Purification:	Immunogen affinity purified
Purity:	≥95% as determined by SDS-PAGE
Host:	Rabbit
Clonality:	polyclonal
Clone ID:	None
IsoType:	IgG
Storage:	PBS with 0.02% sodium azide and 50% glycerol pH 7.3, -20°C for 12 months(Avoid repeated freeze / thaw cycles.)

### Background

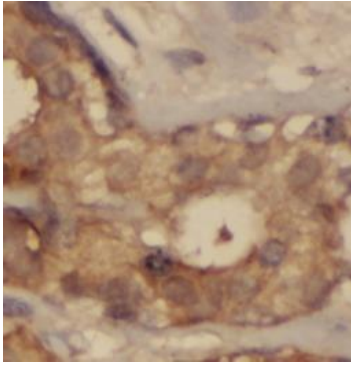
Acts probably as a receptor for selective autophagosomal degradation of ubiquitinated targets.

### Immunogen information

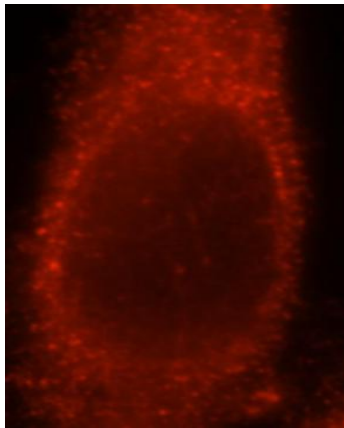
Immunogen:	neighbor of BRCA1 gene 1
Synonyms:	Next to BRCA1 gene 1 protein Cell migration-inducing gene 19 protein Membrane component chromosome 17 surface marker 2 Neighbor of BRCA1 gene 1 protein Protein 1A1-3B NBR1 1A13B KIAA0049 M17S2
Observed MW:	140 kDa
Uniprot ID :	Q14596

### Application

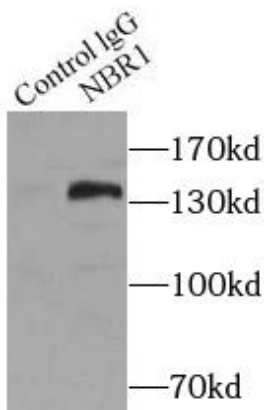
Reactivity:	Human, Mouse, Rat, Monkey
Tested Application:	ELISA, WB, IHC, IF, IP
Recommended dilution:	WB: 1:500-1:1000; IP: 1:500-1:1000; IHC: 1:20-1:200; IF: 1:10-1:100
Image:	



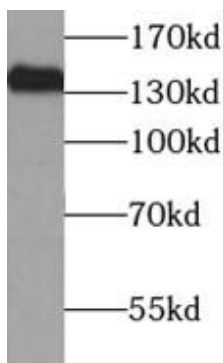
Immunohistochemistry of paraffin-embedded human breast cancer using FNab05568(NBR1 antibody) at dilution of 1:100



Immunofluorescent analysis of HeLa cells, using NBR1 antibody FNab05568 at 1:25 dilution and Rhodamine-labeled goat anti-rabbit IgG (red).



IP Result of anti-NBR1 (IP: FNab05568, 4ug; Detection: 1 FNab05568 1:800) with HeLa cells lysate 2500ug.



HeLa cells were subjected to SDS PAGE followed by western blot with FNab05568(NBR1 antibody) at dilution of 1:1000